

PLAN VIEW

SPECIFICATIONS:

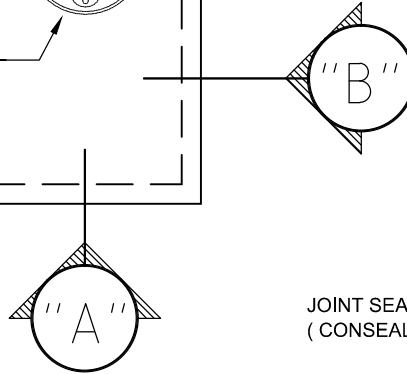
NOMINAL TANK SIZE  
7800 LITER SEPTIC TANK

TOTAL CAPACITY  
9291 LITERS (2043 GAL)  
7857 LITERS (1728 GAL) TO OUTLET

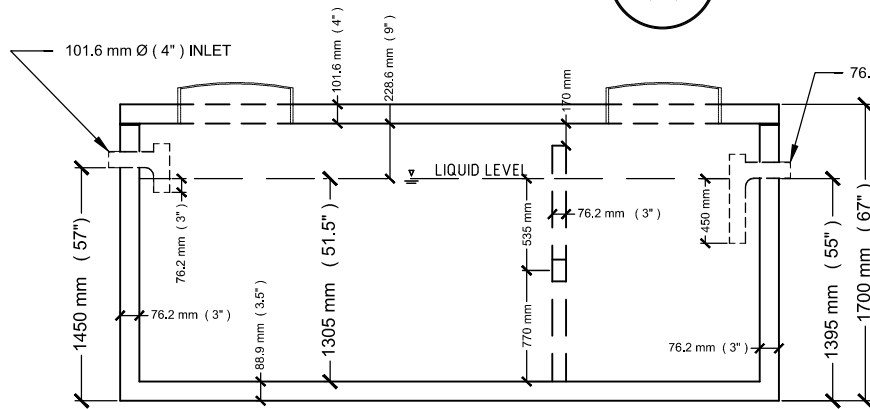
ALL DIMENSIONS DEFAULT TO  
MILLIMETERS  $\frac{\text{mm}}{[in]}$

GENERAL NOTES:

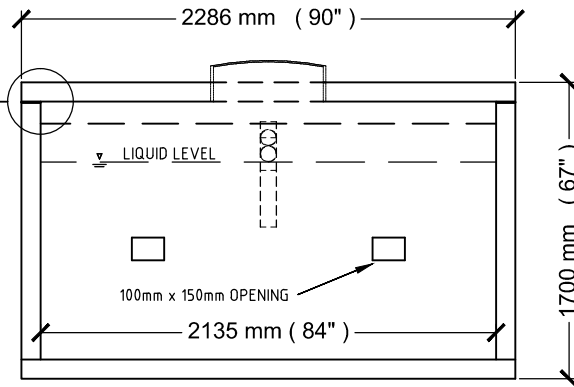
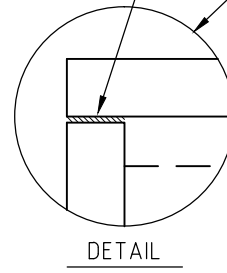
- 1) CONCRETE TO BE 30 MPa @ 28 DAYS WITH 5-8% AIR ENTRAINMENT
- 2) CONCRETE MIX IS NON-SULPHATE RESISTANT
- 3) REINFORCEMENT TO CONFORM TO G30.15 AND CAN/CSA G30.18
- 4) REINFORCEMENT: TOP SLAB REINFORCEMENT  
-10M REBAR EQUALLY SPACED IN BOTH DIRECTION  
BOTTOM SLAB REINFORCEMENT  
-10M REBAR EQUALLY SPACED IN BOTH DIRECTION  
WALL REINFORCEMENT  
-FIBERGLASS MESH ADDED IN CONCRETE MIX
- 5) MINIMUM CONCRETE COVER OVER REINFORCEMENT IS 25.4mm / 1"
- 6) CERTIFIED MINIMUM BURIAL DEPTH: 0.6M ( 24" )
- 7) WEIGHT OF TOP SLAB = 1635 KG / 3605 LBS
- 8) WEIGHT OF TANK SECTION = 4780 KG / 10538 LBS
- 9) ASSEMBLED WEIGHT = 6415 KG / 14142 LBS
- 10) CHAMBER DIVIDER IS CAST SEPARATELY
- 11) NO CENTER JOINT IN TANKS
- 12) 100mmØ INLET AND 75mmØ OUTLET PVC PIPE STUB
- 13) TOP OF OUTLET FITTING EXTENDS TO AT LEAST THE HEIGHT OF CHAMBER DIVIDER WITH 25mm MINIMUM AIR SPACE
- 14) PRODUCT IS FACTORY ASSEMBLED AND AS PER CSA A23.4-09 STANDARD AND CSA B 66-00 STANDARD
- 15) CAN BE CONVERTED INTO A 9291 L / 2043 GAL HOLDING TANK



JOINT SEALANT  
( CONSEAL CS-102 )



CROSS SECTION A



CROSS SECTION B

16525 SIXTH RD, MOOSE CREEK, ON  
KOC 1W0  
PHONE : (613)-538-2381  
FAX : (613)-538-4870

MOOSE CREEK CEMENT PRODUCTS (2006) LIMITED  
CONCRETE 1728 GALLON / 7857 LITER SEPTIC TANK

SCALE

NOT TO SCALE

DATE

JULY 2011

