

TAPERED LAMP POLE BASES AVAILABLE IN TWO DIFFERENT SIZES, SEE LIST BELOW :

36" BASE, 16.5" TOP, 66" HIGH : WEIGHT 2096.4 KG / 4621.7 LBS

48" BASE, 20" TOP, 96" HIGH : WEIGHT 5104.6 KG / 11253.7 LBS

6% - 8% AIR ENTRAINED

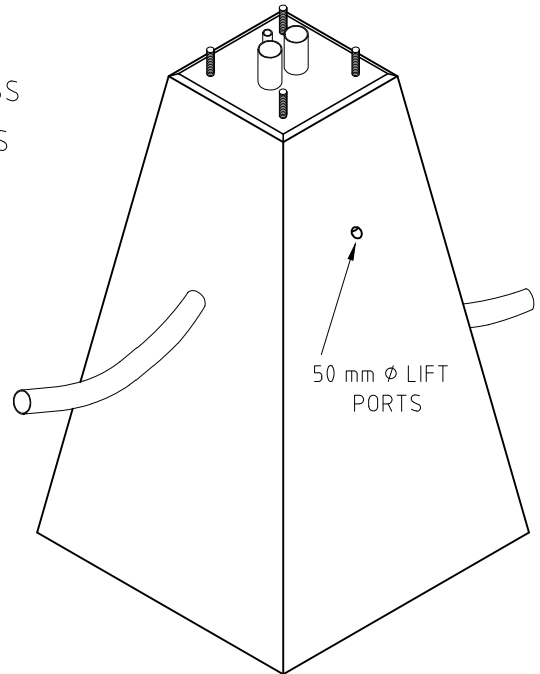
35 MPa (5000 psi) @ 28 DAYS

AS PER CSA A23.4-09 STANDARD

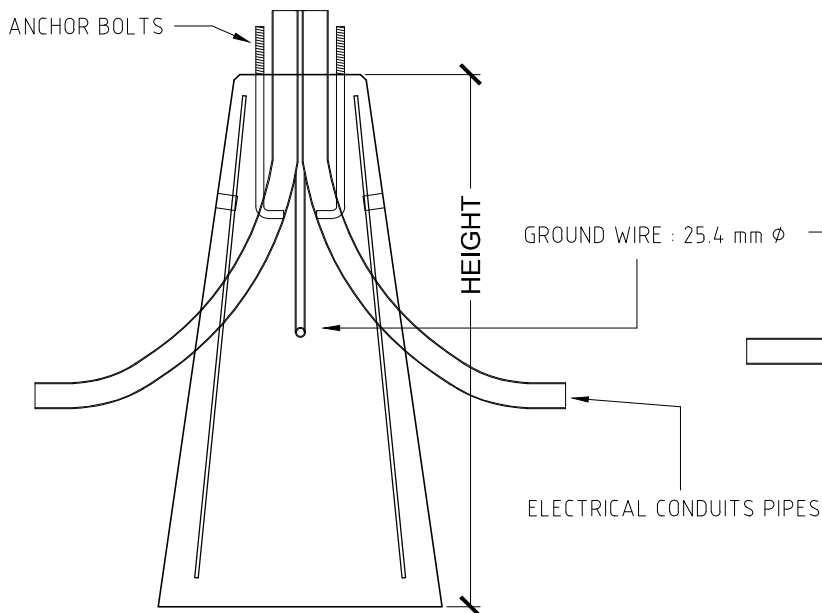
ALL DIMENSIONS DEFAULT TO MILLIMETERS
 mm
 [in]

ELECTRICAL CONDUITS PIPES AND BOLT CONFIGURATION CAN DIFFER FROM BASE TO BASE UPON ORDER.

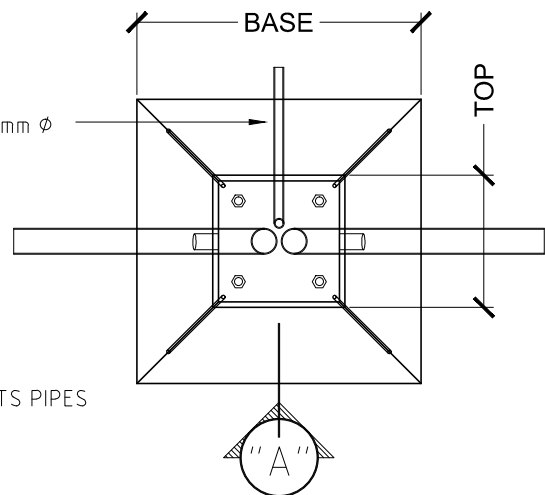
CAN BE ORDERED IN DIFFERENT HEIGHT UPON REQUEST.



ISOMETRIC VIEW



SIDE VIEW A



TOP VIEW

MOOSE CREEK CEMENT PRODUCTS (2006) LIMITED
 TAPERED LAMP POLE BASE

NOT TO SCALE

DATE AUGUST 2011

16525 SIXTH RD, MOOSE CREEK, ON
 KOC 1W0
 PHONE : (613)-538-2381
 FAX : (613)-538-4870

