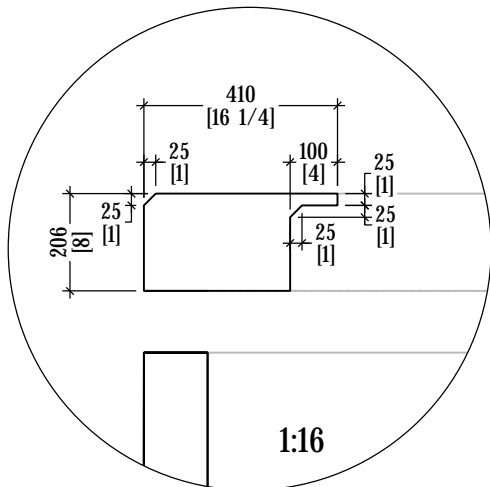
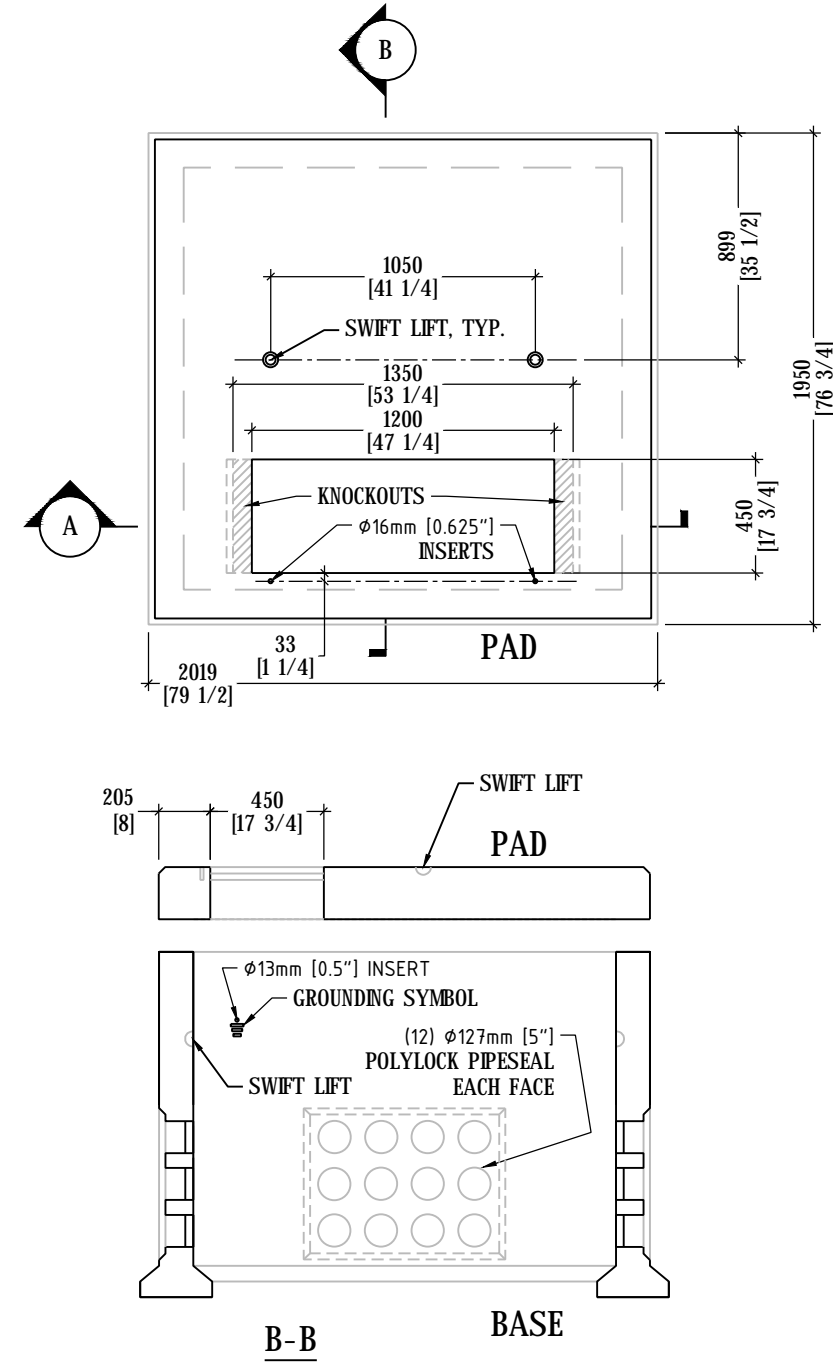
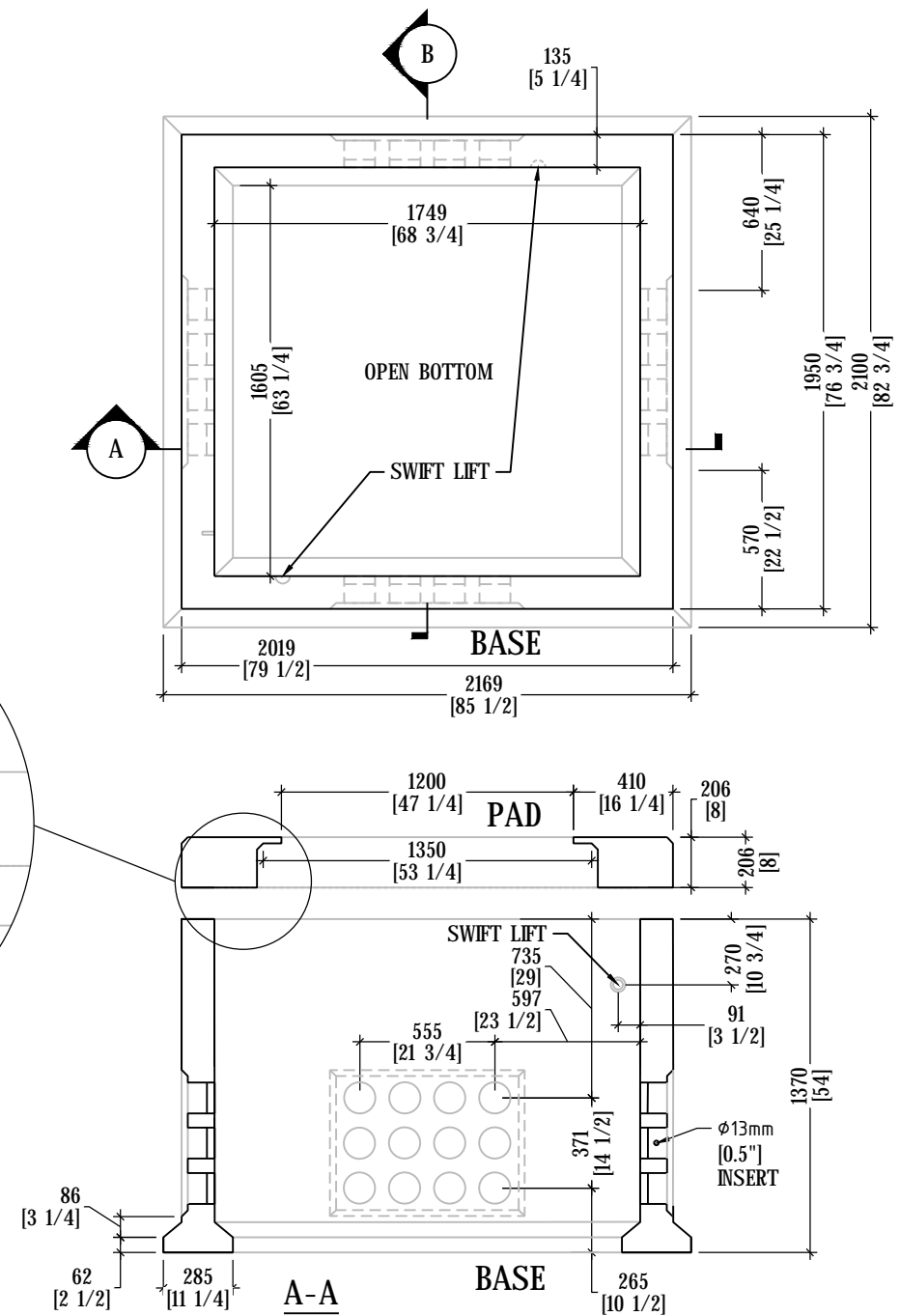


SPECIFIED DESIGN LOADS		
UNIFORM LATERAL LOAD ON EXTERIOR WALLS	25kN/m ²	DUE TO SATURATED BACKFILL AND SURCHARGE
UNIFORM LOAD ON TOP SLAB/COVER	50kN/m ²	ASSUMING MAX TRANSFORMER WEIGHT OF 73.87KN (7530KG)
POINT LOAD ON TOP SLAB/COVER	70kn	DUE TO CSA S6-14, CL-625 TRUCK, SINGLE WHEEL



mm [inches], SCALE=1:30, UNLESS NOTED OTHERWISE



REFERENCE DESIGN : HYDRO OTTAWA UCS001
 CONCRETE: CAN/CSA G23.1/23.4-05
 35MPa AT 28 DAYS, EXPOSURE CLASS:C1, AIR: 6-8%
 REINFORCEMENT: CSA G30.18-400W

BASE
 (12) 127MM [5"] ϕ POLYLOK PIPESEAL OPENINGS, PER SIDE (48 TOTAL)
 (1) 16MM [0.625"] INSERTS, INTERIOR, GROUNDING
PAD
 (2) 16MM [0.625"] INSERTS
 NO LOADS ON KNOCKOUTS

DESCRIPTION		
TRANSFORMER BASE & PAD		
THREE PHASE 150kVA-2500kVA		
ITEM CODE	REV	DATE
0200	1	28-03-2019
OUTSIDE DIMENSIONS		TOTAL WEIGHT
2100x2170 x1370		5,240KG/11,550LBS